



**DIMO**  
THE PERFECT PARTNER

# WATER TECHNOLOGIES







DIESEL & MOTOR ENGINEERING PLC

# ABOUT DIMO

Since its establishment in 1939 DIMO offers an array of trusted, globally recognized brands that provide World-class products for the Sri Lankan market. DIMO adds value to these brands through its local strengths and capabilities. The company has completed 8 decades of business excellence by consistently delivering outstanding products and services while ensuring that its business model will generate sustainable value for the future.

DIMO's products and services include Agriculture, Automotive Components, Building Management, Construction Machinery, Consumer Products, Education, Civil Construction, Water Projects, Building Service Projects, Medical Engineering, Power Solutions, Power Systems, Storage Systems, Tools and Equipment, Tyres, Vehicle Repairs and Vehicles.

DIMO is in the forefront of developing country's infrastructure in Power, Water management, transportation and many more aspects, keeping with DIMO's purpose to fueling the dreams and aspirations of the communities it serves. DIMO's expertise in the field of engineering enabled us to bring world-class technological solutions to the country while improving the quality of life of Sri Lankans.



# WATER PROJECTS OVERVIEW

**DIMO** is a CIDA-C1 accredited contractor for civil construction work of water projects which is one of the highest grades in the country. Furthermore, we are proud to state that we are an EM 1 graded contractor that can undertake the entire scope of building services projects. The 'Electrical & Mechanical 1' (EM1) is awarded by the Construction Industry Development Authority (CIDA), the apex accreditation institute for construction and development in Sri Lanka. This enabled us to cater for both civil construction and M&E scope of work in any water project. The company successfully obtained ISO 14000 and ISO 17000 certification as well.

Over the past 50 years, DIMO has been working closely with the National Water Supply and Drainage Board of Sri Lanka as one of the leading contractor contributing to a vast number of water projects around the country. In addition, DIMO has completed many foreign funded water projects by World Bank, Asian Development Bank and JICA as well. DIMO has the capability to drive any complex project from project planning to designing and execution with the expertise and experience of DIMO's engineers.

With government's initiative to enhance the pipe borne water supply coverage in the country, DIMO has contributed immensely for water projects such as construction of water treatment plants, water storage tanks, pump houses and treated water distribution lines in Sri Lanka. Its main objective is to increase the supply of pipe borne water to every citizen in the country and improve sanitation facilities.

Today, DIMO has made an indelible imprint as the market leader in water and wastewater projects of the country. It has provided leadership to Sri Lanka's construction industry by achieving exceptional growth, quality of work, timely delivery whilst setting benchmarks in safety & environmental performance.







# HUMAN CAPITAL

**DIMO** has become one of Sri Lanka's leading organizations in the field of engineering, representing over fifty of the world's most renowned brands. Given the technical aspect of our product offering, we have a fully-fledged team which primarily consists of different experts with an engineering background. This team includes Project Managers, Mechanical Engineers, Electrical Engineers, Civil Engineers, Quantity Surveyors and Technicians. They undergo regular internal training and development programmes that provide them with all-round knowledge in areas such as technical expertise, leadership development, products and market training as well as professional skills. As with all staff at DIMO, the team demonstrates what can be achieved when passion meets possibility.





# ACCREDITATION

Over the years, the Industrial Engineering and Projects Division of **DIMO** has been successful in constantly elevating our knowledge and service level to the highest possible standard in order to achieve international accreditations. By achieving these prestigious local and international accreditations, we have highlighted the fact that our solutions and services are world-class.

## EM1

Highest accreditation  
in Electrical &  
Mechanical  
Services (EM)

## C1

Accreditation in  
Civil Construction  
in Water Supply  
and Sewerage

ISO 14000  
certification and  
ISO 17000  
certification

# TECHNICAL SUPPORT & AFTER SALES SERVICE

DIMO technical support team will be heavily-involved in the installation, system integration, testing and commissioning of the equipment as per manufacturer's guidelines and client's specifications. DIMO's professional approach will ensure the timely completion of the project to the highest of quality standards.

At DIMO, we take pride in offering after-sales service of the highest standard for all our clients. Our professional after-sales team will always be ready to look into any requirement that you may have in terms of after-sales testing and commissioning. Additionally, the DIMO approach ensures that we add value locally on top of our international partner's warranty which means that the warranty is enhanced to cover all possible areas making it more meaningful and comprehensive. Additionally, our customized service agreements will ensure that your equipment will be looked after exceptionally well through regular system health checks and spare parts replacements, if required. Our after-sales team is ready to provide support at any location 24x7, so that the investment you make today will continue to perform to its true potential for a long time







# **CIVIL CONSTRUCTION IN WATER & WASTEWATER PROJECTS**

# OUR SOLUTIONS



**INTAKE CONSTRUCTION**

**WATER TREATMENT PLANT**







**AERATORS**

**FLOCCULATORS**



**SEDIMENTATION  
TANK**

**RAPID SAND FILTER  
& GAC FILTERS**



# **WATER TREATMENT PLANT**



**BACK WASH  
RECOVERY TANK**

**SLUDGE  
DRYING BED**



**GROUND  
RESERVOIR**



**WATER PUMPING  
STATION**



**PIPE LAYING  
(DI/ HDPE / UPVC)**



**WATER ELEVATED  
TOWERS**



**PACKAGE  
TREATMENT PLANT**



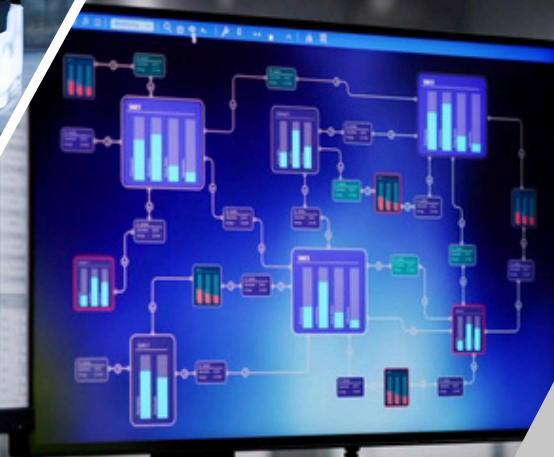
The background image shows a complex industrial system, likely for water or wastewater treatment. It features large blue pipes, valves with yellow handwheels, and various mechanical components. The scene is dimly lit, with some light reflecting off the metallic surfaces. A semi-transparent blue overlay covers the entire image, and the title text is centered in white. A solid blue bar is at the bottom, and a small yellow bar is at the bottom left corner.

# **ELECTROMECHANICAL SYSTEM INTEGRATION IN WATER & WASTEWATER PROJECTS**

**OUR SOLUTIONS**

**CONTROLS,  
SCADA SYSTEMS &  
SYSTEM INTEGRATION**

**PUMPS AND VALVES**







INSTRUMENTATION

SURGE VESSELS



AIR BLOWERS



HOISTING  
EQUIPMENT



GENERATORS



# WASTEWATER TREATMENT TECHNOLOGY





# WATER TREATMENT TECHNOLOGY



ULTRA FILTRATION

REVERSE  
OSMOSIS



DE-MINERALIZATION  
PLANT



SUBMERGED MBR

NUT SHELL  
FILTER



INDUCTED  
GAS FLOTATION

# PROJECT REFERENCES



**Construction of Mocha-A Water Supply Scheme**  
150m<sup>3</sup>/day Treatment Plant

**Construction of Kilinochchi Water Treatment Plant**  
4500m<sup>3</sup>/day Treatment Plant



## **Ettampitiya Water Supply Scheme**

Supply & Installation of Chlorinators | Hoisting Equipment & Accessories | High Lift Pump | Booster Pump | Back Wash Pump & Automation | Air Blower & Accessories | Lifting Equipment | Level Monitoring System | Lighting Protection System | Sound Proof Generator Set | Alum & Lime Dosing System | Sampling Collection System



**Construction of Bulathkohupitiya Integrated Rural Water Supply Scheme**  
1000m<sup>3</sup>/day Package Treatment Plant



**Construction of Nikawewa and Bodagama Water Supply Scheme**

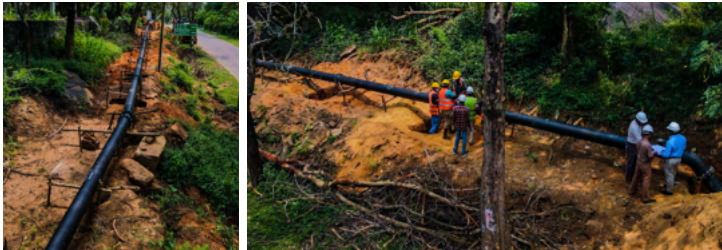
10m<sup>3</sup>/day Capacity Reverse Osmosis Plant





### **Meewathura Water Supply Scheme**

Supply & Installation of 250kw Centrifugal Pumping Sets | Starter panel | Automation works & Accessories



### **Construction of Orubandiwewa Rural New Water**

Supply Scheme - Phase II and III  
180Km HDPE /DI Pipe supply & Laying



### **Energy Saving of Ambathale Production Facilities**

400Kw 8 Pole 400V Split casing Pumps with cardan shaft | 250Kw 8 Pole 400V Split casing Pump with cardan shaft | 400Kw 8 Pole 400V Split casing Pumps | 480Kw 6 Pole 400V Split casing Pumps | 480Kw



### **Buttala Monaragala Water Supply Scheme**

Supply & Installation of 55kw End Suction Multistage Sets | Starter panel & Automation | 3000L Surge Vessel | Instrumentation | 02 Ton Lifting equipment | 150KVA Generator & Accessories



### **Old Intake Rajasinghe Jalagaraya Mulleriyawa Ambathale**

Supply & Installation of 355kw Split Casing Pumping Set & Starter Panel & Accessories



### **Laying of additional pipe line in Galigamuwa Urban Water Supply Scheme**

93Km HDPE/DI Pipe Laying



### Hangilielaa Rural Water Supply Scheme

150m<sup>3</sup>/day treatment capacity | provided drinking water for 300 households



### Rehabilitation of Niwithigala Rural Water Supply Scheme

150m<sup>3</sup>/day treatment capacity | Provided drinking water for 300 households 10,000 Nos. of Water Meter Connections



### Greater Kandy Water Supply Scheme

Supply & Installation of entire range of Pumps and Controls



### Polonnaruwa Water Supply Scheme

Supply & Installation of vast range of controls



### Ruhunupura Water Supply Scheme

Supply & Installation of Intake Pumps and Controls



### Baddegama Water Supply Scheme

Supply & Installation of High Lift Pumps & Intake Pumps





### Balagolla Water Supply Scheme

Supply & Installation of High Lift Pumps & Controls



### Ambathale Old Intake Augmentation

Supply & Installation of 355kw Split Casing Pumping Set & Starter Panel & Accessories



### Embilipitiya Water Supply Scheme

Supply & Installation of 45kw Split Casing Pumping Sets | Starter panel | 5000L Surge Vessel | Instrumentation | 02 Ton Lifting equipment & Accessories



### Balakawala Water Supply Scheme

132kw Turbine Pumps, Starter Panel | Instrumentation | Surge Vessel & Accessories



### Katawala Water Supply Scheme

30Km DI/HDPE Pipe laying and 300m3/day treatment plant



No. 65, Jethawana Road, Colombo 14, Sri Lanka.  
[www.dimolanka.com](http://www.dimolanka.com) | [www.facebook.com/DimoSriLanka](https://www.facebook.com/DimoSriLanka)  
Tel: +94 11 244 97 97

**Manoj Jayakody**

 077 2017 622  [manoj.jayakody@dimolanka.com](mailto:manoj.jayakody@dimolanka.com)

**Siraj Mirantha**

 076 912 0312  [siraj@dimolanka.com](mailto:siraj@dimolanka.com)

