

# GRAPHENSTONE

SRI LANKA'S ONLY CO<sub>2</sub> ABSORBING PREMIUM PAINT



**PAINT BETTER**  
*breathe* **BETTER**



Only available at

[www.dimoretail.lk/graphenstone](http://www.dimoretail.lk/graphenstone)







# Profile

**Graphenstone.  
Paints and coatings  
for the 'green generation'!**

Graphenstone is the brainchild of a chemical engineer who dedicated himself to the idea of developing a natural, ecological and health conscious coating for the 21st century. Antonio León Jiménez has succeeded in his mission and is today President and CTO (Chief Technical Officer) of Graphenstone.

Having spent years working as CTO in a successful Spanish coatings firm, Antonio began his new enterprise, IEdISA, in 2009. This became the foundation for Graphenstone.

In his role as President of Graphenstone, Antonio has committed himself tirelessly to the development and creation of the most innovative and ground breaking line of natural paints and mortars using lime from the highest quality local sources. This unique lime is created through using a 100% natural and environmentally friendly production cycle. Thus, a tradition which had almost been forgotten has been brought back onto the market.



## Our contribution to the building of healthier and sustainable homes.

The next step. After generating new ecological, natural and sustainable coatings with a lime base, Antonio León took the process a step further by using the innovative measure of adding graphene to the formula. The objective behind the utilisation of graphene was to enhance the products properties by improving resistance, flexibility and conductivity while maintaining its natural qualities.

Perseverance was key. After a year of research at the University of Seville and numerous unsuccessful attempts, the Antonio achieved his goal which was to develop a graphene polymer able to improve the material qualities with outstanding results.

---

## The very first range of paints and coatings with graphenstone technology.

Graphenstone was created in November 2013. Antonio's dream came true when he created a worldwide groundbreaking eco-friendly product with exceptional qualities. Since the production of our initial range of paints and coatings, we have continued to work diligently creating ever more healthy and sustainable coatings for all manner of buildings.



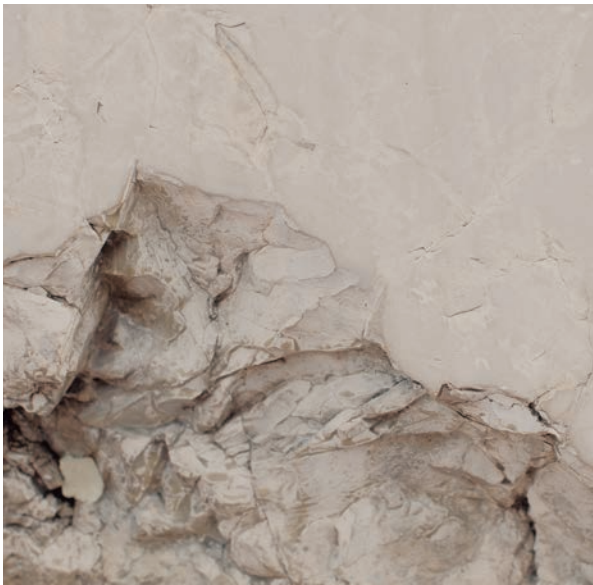
WORDL'S FIRST

## Lime Basis

High Quality Lime is the raw material of Graphenstone's products.

The Graphenstone products use lime made in wood burning kilns, which produces a high degree of whiteness and purity. This natural lime, has been produced in this way since the midnineteenth century.

Furthermore, the lime cycle is 100% natural, from the wood used to feed the oven, through the firing, to the collection.



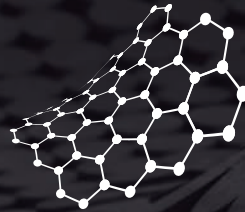


The artisan method to obtain the lime results in a high whiteness and purity.

---



# Unique qualities of graphene



## **FLEXIBILITY**

Up to 20% flexibility  
without damage.

---

## **STRENGTH**

200 times stronger than  
structural steel.

---

## **THERMAL CONDUCTIVITY**

Scientifically proven  
high thermal conductivity.

---

## **ELECTRICAL CONDUCTIVITY**

1000 times better conductor of  
electric current density than copper.

WORLD'S FIRST

# Graphenstone Technology

Graphenstone paints combine lime and graphene technology in a unique formula that we call Graphenstone Technology. Lime, a natural and completely artisanal material, is complemented by graphene materials that improve its strength and flexibility. This perfect blend of tradition, innovation and technology enables us to create premium, environmentally friendly paints of the highest quality, with a longer life and lower maintenance, which translates into considerable savings. That's Graphenstone Technology.

**“We use this technology to achieve more efficient materials that meet the requirements of today's highly demanding market which is committed to new and more sustainable methods of manufacturing.”**





AN INCOMPARABLE PAINT

# Perfect Mix

Tradition, innovation & technology are the perfect ingredients.

Lime and graphene combined form the ultimate ecological natural coatings and paints in the world. This is why Graphenstone products have excellent performance and covering properties. Thanks to their flexibility, the coatings neither crack nor flake. They also contribute to energy saving due to their great reflective power. Moreover, thanks to its mineral character it reduces the reverberance of the sound.

We design and manufacture with respect for the environment, the circular economy and energy efficiency; this is the reason why our products fit perfectly in Green Buildings or Eco-buildings, Passive Houses and Smart Cities.





Graphenstone is the most advanced solution of ecological and natural, paints and coatings in the market.



# Healthy Environments



HIGH QUALITY  
LIME BASE



SUSTAINABLE  
BUILDING



SMART CITIES



HIGH QUALITY  
& CERTIFICATION



GRAPHENE  
TECHNOLOGY



UNIQUE IN THE WORLD



MINIMUM CARBON FOOTPRINT



BREATHABLE PURIFIES THE ENVIRONMENT



ABSORBS CO<sub>2</sub>



100% ECOLOGICAL ECO FRIENDLY



ENERGY SAVINGS



COSTS SAVINGS



HIGH PERFORMANCE



RESISTANT & DURABLE



WASHABLE



RESISTS EXTREME WEATHER CONDITIONS



REDUCES SOUND TRANSMISSION



CREATES HEALTHY ENVIRONMENTS



HIGH-STANDARD DECORATION



ART & DECORATION



HERITAGE RESTORATION



INTERIORS



EXTERIORS



STORES



LARGE SURFACES



HOUSING & SCHOOLS



LABORATORIES & RESEARCH CENTRES



HEALTH SECTOR



INDUSTRY



OFFICES & UNIVERSITIES



## MY HOME IS A TREE

# Transform your HOUSE into a TREE by painting with Graphenstone

Imagine transforming your home, your building or your town into a much greener place! With Graphenstone, this is now a reality. Just three 15 litre buckets of Graphenstone paint removes no less than 14.40kg of CO<sub>2</sub>. The same amount as an adult tree weighing 250kg!

Convert your home into a tree, your building into a garden and your town into a forest. This incredible change is possible today. And Graphenstone provides the key. Let's create a more sustainable world.

More information about the campaign at:

[www.myhomeisatree.com](http://www.myhomeisatree.com)

**Three 15 litre buckets removes no less than 14.40kg of CO<sub>2</sub>**





1L | 4L | 10L | 20L

# GRAPHENSTONE

## Ecosphere *Premium*

Ecological lime paint with graphene for INTERIORS

Ecosphere Premium is a natural mineral paint for interiors. Leaving behind a matte finish it is ideal for construction, restoration and repainting. Thanks to its formula based on artisanal lime with graphene technology, it is breathable, avoids condensation, is washable, does not yellow and absorbs CO<sub>2</sub>.

Ideal for application in construction, restoration and repainting.



**BREATHABLE**  
PURIFIES THE  
ENVIRONMENT



**ABSORBS CO<sub>2</sub>**  
SUSTAINABLE  
PRODUCT



**EXCELLENT**  
COVERING POWER

### MAIN FEATURES

PERFORMANCE	6-9 m <sup>2</sup> /L (2 coats) 12-18 m <sup>2</sup> /L (1 coat)
DRYING	2-4 hours (between coats) 24 hours (total drying)
HIDING POWER	Excellent
WASHABILITY	Good
COLOURS	White
FINISH	Matte





1L | 4L | 10L | 20L



**BREATHABLE**  
PURIFIES THE  
ENVIRONMENT



**ABSORBS CO<sub>2</sub>**  
SUSTAINABLE  
PRODUCT



**EXCELLENT**  
COVERING POWER

# GRAPHENSTONE

## Biosphere *Premium*

**Ecological lime paint with graphene for EXTERIORS**

Biosphere Premium is a natural mineral paint designed for outdoor surfaces. Leaving behind a matte finish, it is ideal for construction, restoration and repainting. Thanks to its formula based on artisanal lime coupled with graphene technology, it is breathable, minimizes condensation, is washable, does not yellow and absorbs CO<sub>2</sub>.

**Application in construction, restoration and repainting.**

### MAIN FEATURES

PERFORMANCE	6-9 m <sup>2</sup> /L (2 coats) 12-18 m <sup>2</sup> /L (1 coat)
DRYING	2-4 hours (between coats) 24 hours (total drying)
HIDING POWER	Excellent
WASHABILITY	Good
COLOURS	White



Contributes to energy savings due to its exceptional reflective power and thermal emittance, while its mineral character reduces sound reverberation. The graphene technology also (material with greater thermal conductivity scientifically proven), regulates and distributes the temperature of spaces avoiding condensation and reducing cold spots.





1L | 4L | 10L | 20L

FREE VOCs + ANTIMICROBIAL EFFECT



ANTIMICROBIAL EFFECT



VERY GOOD COVERING POWER



BREATHABLE PRODUCT

# GRAPHENSTONE

## GrafClean Ag+ Premium

Ecological antibacterial paint with graphene for INTERIORS

GrafClean Ag+ Premium is an ecological paint made based on a silver ion (Ag+) formula, which fortifies it with antimicrobial properties that prevent the development of bacteria, fungus, viruses and protozoa.

Ideal for decorating facades and interiors of buildings, homes, hospitals, clinics, etc.

### MAIN FEATURES

PERFORMANCE	5-8 m <sup>2</sup> /L (2 coats) 10-16 m <sup>2</sup> /L (1 coat)
DRYING	2-4 hours (between coats) 24 hours (total drying)
HIDING POWER	Very good
WASHABILITY	Excellent
COLOURS	White





1L | 4L | 10L | 20L



**BREATHABLE**  
PURIFIES THE  
ENVIRONMENT



**ABSORBS CO<sub>2</sub>**  
SUSTAINABLE  
PRODUCT



**EXCELLENT**  
COVERING POWER

# GRAPHENSTONE PrimerPlus

Natural sanitizer product for  
interior and exterior surfaces **UNDERCOATING**

Exclusive primer before **GrafClean AG+**

Primer Plus is free of toxic substances. It also contains Calcium Hydroxide and is known to have a high pH content. This makes it a natural sanitizing compound that is ideal for interior and exterior surfaces.

Functionality - The sanitizing properties come into effect after the film drying process has begun. One week later, the surface must be recoated with GrafClean Ag+ white or colour, in order to sustain sanitizing activity.

**Ideal for protecting your home.**

## MAIN FEATURES

PERFORMANCE	Up to 450 Sq. Ft p/ Gallon (1 coat)
DRYING	2-4 hours (between coats) 24 hours (total drying)
COLOURS	White

# Quality

## Graphenstone equates to quality & certifications

At Graphenstone we are committed to the environment which is why we produce natural materials. Among our values are ecology, nature, sustainability and respect for the environment. Our products meet the principles of a circular economy. It is in our DNA to be an innovator and creator of ecological and respectful products for the people and the environment. Ultimately, we want the construction sector to serve humans and not the inverse.

Our philosophy: acting as a benchmark for other companies, complying with the requirements of green building through economic activity. Because, for us, innovation and sustainability go hand in hand.



World's most Certified Green brand

# Cradle To Cradle

Graphenstone has achieved Cradle to Cradle Certification, a key distinction in our products, worldwide.

Graphenstone has developed a product range with a whole green life cycle. It complies with the reuse, reduce and recycle philosophy, guaranteeing the most efficient use of materials. For that reason, Graphenstone meets the Cradle to Cradle certification programme requirements, obtaining the following levels of certification:



Cradle to Cradle Certified™  
**GOLD**

- Biosphere Premium
- Ecosphere Premium
- AmbientPro+ Premium
- Stuki Premium
- Kratzputz Premium
- MortarBase Premium with Kalgraphin Premium
- MortarFine Premium with Kalgraphin Premium
- MortarSuper Premium with Kalgraphin Premium
- Naturglue Premium with Kalgraphin Premium
- Firenzza (material A & B)
- Modena (material A & B)



Cradle to Cradle Certified™  
**SILVER**

- Ecosphere Colour Premium Biosphere
- Colour Premium AmbientPro+ Colour
- Premium Stuki Colour Premium
- Graphensonte ColorSystem GCS 980.
- Graphensonte ColorSystem GCS 322



**“Graphenstone eliminates any concept of waste and becomes a product with a green life cycle.”**



Material Health Certified™  
**GOLD**

- Biosphere Premium
- Ecosphere Premium
- AmbientPro+ Premium
- Filler Premium
- Stuki Premium
- Kratzputz Premium

# Global Green Tag

Graphenstone. Committed to the health of materials. Mineral paints and primers.

Global GreenTag is one of the world's most robust, trusted and widely recognised eco labels. We independently assure that every product is fitness tested and certified under one of our two leading certification programs that use world's best scientific methods.

That's why we have earned the reputation and trust of thousands of buyers, hundreds of companies and numerous green building councils, certification bodies and governments around the world.



Green Tag Certified™  
Green Rate | LEVEL A



Biosphere Premium  
Ecosphere Premium  
Stuki Premium

AmbientPro+ Premium  
Kratzputz Premium



Green Tag Certified™  
Health Rate | GOLD

Biosphere Premium  
Ecosphere Premium  
Stuki Premium  
AmbientPro+ Premium



**Global GreenTag**  
is one of the world's most  
robust, trusted & widely  
recognised ecolabels for buyers  
and companies.



# Asthma Friendly

Graphenstone – Free of VOC emission.  
Mineral paints, renders and primers.

Graphenstone is the ultimate ecological range of products, composed of natural elements that purify the air we breathe inside our homes. It is suitable for people suffering from chemical intolerance and respiratory issues like asthma.

Graphenstone is recommended for indoor enclosures, hospitals, nurseries, schools, or rooms for infants and children.



Sensitive Choice  
APPROVED™  
**Asthma friendly  
products**

- Ecosphere Premium
- Biosphere Premium
- Ambient Pro+ Premium Stuki
- Premium Kratzputz Premium
- MortarBase Premium
- MortarFine Premium
- MortarSuper Premium
- Naturlglue Premium
- Kalgraphin Premium

# Sustainable Materials

Graphenstone® lime based product contribute to the achievement of the certifications: LEED v4, LEED v2009 and BREEAM ES.

Mortars and paints with lime base. The porous nature of the lime ensures the breathability of the walls, avoiding humidity and creating safe and healthy environments.



**FAMILY COMPONENTS:**  
 Biosphere Premium  
 Ecosphere Premium  
 AmbientPro+ Premium  
 Filler Premium  
 Stuki Premium  
 Kratzputz Premium

**Summary table: Environmental parameters in which the material has a specific contribution.**  
 Detailed in the files of the respective environmental certifications GREEN, LEED and BREEAM

**Support documents**    ■ **Certifications: DAP, CSR, REACH**    ■ **Self-declarations**    ■ **Potential**

Category	Support documents	Certifications: DAP, CSR, REACH	Self-declarations	Potential
Plot Mobility	Solar Reflectance Index SRI	Rain water management	Ext. lighting control	...
Energy Atmosphere	Embedded energy	Greenhouse effect gases	Energy demand reduction	Equipment efficiency, Other polluting gases, Renewable energy, Energy management, ...
Materials	Accredited location	Recycling pre-consumption	Recycling post-consumption	Potencial reutilización, Certified wood, Waste, Chemical composition
Water	Consumption <reference	Water management	...	...
Interior Environment	Low VOC emission	Low formaldehyde emission	Comfort control	Lighting comfort, Acoustic comfort, Air quality, ...
Innovation	Innovation Design	...	...	...



More information:  
[www.materiales.gbce.es](http://www.materiales.gbce.es)

# Awards

The recognition of Graphenstone's work has been awarded around the world in categories such as: Innovation, Construction, Environment or Product Design.



**"Business Quality"**  
European Association of  
Economy & Competitiveness  
Spain - Dec. 2018



**"Corporate Social Responsibility"**  
Andalucía Management Awards  
Spain - Nov. 2018



**"Niche company of the year"**  
ACQ5 Global Awards  
- Jun. 2018



**"Germany Trade & Invest Award for International Expansion"**  
European Business Awards  
Belgium - Apr. 2018



**"Product design, Commercial & Industrial"**  
London Design Awards  
United Kingdom - Nov. 2017



**"Gold Star"**  
Professional Excellence Award  
Spain - Nov. 2017



**"Innovative Construction Solution of Spain"**  
Technology Awards - La Razón  
Spain - Nov. 2017



**"The Best Sustainable Element"**  
Best Sustainable Element Award  
Denmark - Oct. 2017



**"Environmental Commitment"**  
"Andalucía Excelente" Awards  
Spain - Oct. 2017



**"Innovation product"**  
Green Interior Awards  
Australia - Jul. 2017



**"Architecture & Construction"**  
IX NAN / XI NAN Awards  
Spain - Nov. 2015 y 2017



**"Innovation & Sustainability in Construction"**  
Beyond Building Construmat.  
Spain - May. 2015

# yoga

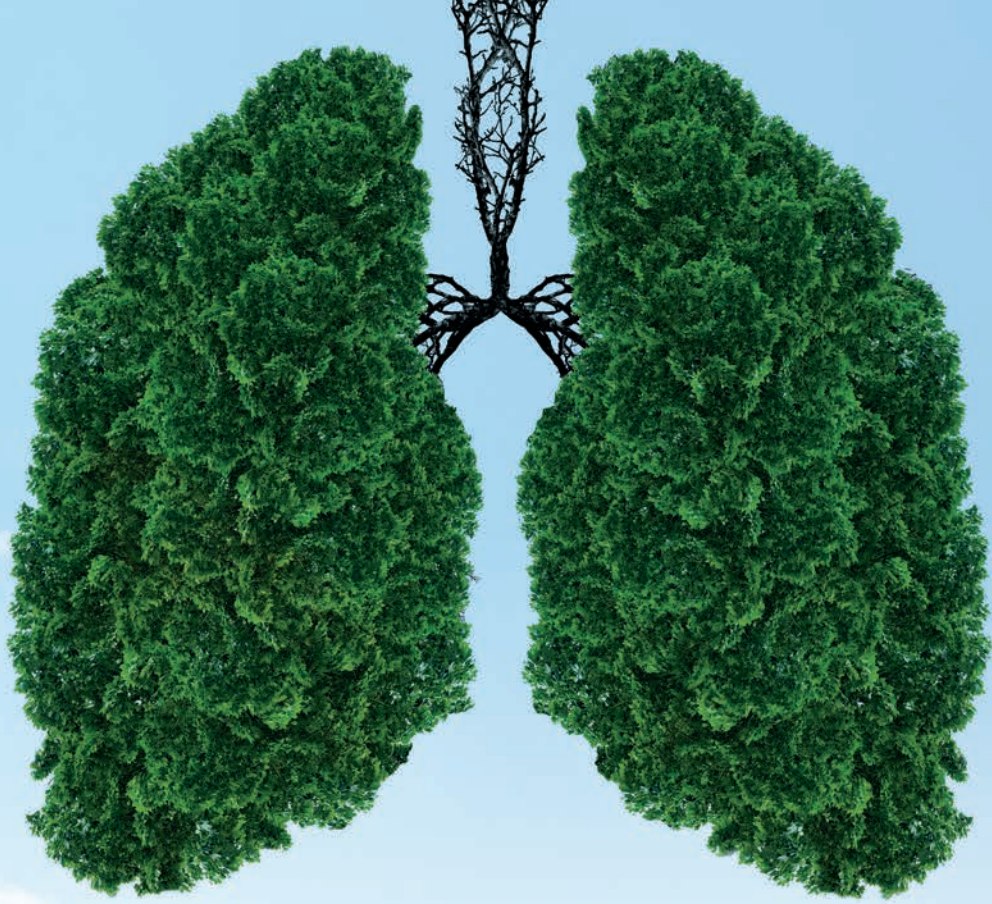
## Take a deep breath. Breathe in the fresh air.

Thanks to the raw materials that go into Graphenstone paint, your home is now covered in a natural lime-based coat that is highly breathable with natural antibacterial and insect repellent properties. A VOC-free paint that absorbs CO<sub>2</sub> during its carbonation process, which in turn helps reduce CO<sub>2</sub> in the air.

So, take a deep breath and inhale the fresh air, transform your living space into a place of meditation and relaxation.







# PAINT BETTER *breathe* BETTER

Paint is no longer just for creating beautiful spaces, colourful spaces or bright spaces, it is also about creating breathing spaces.

Graphenstone manufactured in Spain, is Sri Lanka's only CO<sub>2</sub> absorbing premium paint that transforms your living space into a fresh breathing space.

# Global

## International Delegations

### Europe:

Germany  
Austria  
Benelux  
Spain  
France  
Italy  
Portugal  
UK  
Switzerland  
Ukraine

### Asia & Oceania:

Australia  
China  
South Korea  
Philippines  
India  
Japan  
Malaysia  
New Zealand  
Singapore  
Thailand  
Vietnam

### Middle East:

Turkey  
Kuwait  
United Arab  
Emirates Qatar

### North America:

U.S.  
Canada

### Central America:

Panama  
Mexico

### South America:

Bolivia  
Chile  
Colombia  
Costa Rica  
Ecuador  
Peru

### Africa:

Cameroon







DIMO is an organization that has built its legacy around the offering of a myriad of exceptional products and services that extend across an extensive range of industries that include, automotive, medical, education, power and many others.

Over the years our commitment to service and quality have earned us the trust and confidence of generations of Sri Lankans. A sentiment that we hold in high regard; one that we will continue to uphold in every aspect of our offering.

Staying true to its promise of quality DIMO adds yet another brand to its growing portfolio of solutions with Graphenstone, Sri Lanka's only CO<sub>2</sub> absorbing premium paint manufactured in Spain.

Graphenstone is the most advanced solution of ecological and natural paint in the market; a paint that transforms your living space into a fresh breathing space.

A graphene-based innovation that while improving the breathability of your home, also enhances hardness, homogeneity, strength and conductivity to your walls and living space.

